

Usifer Usinagem e Ferramentaria

+55 24 3353-5366

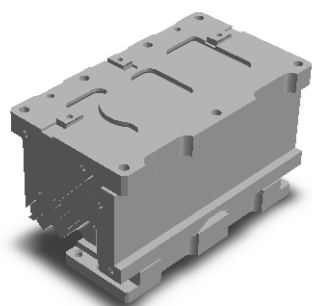
+55 24 7812-4870 - ID 104\*213131

comercial@usifer.net

[www.usifer.net](http://www.usifer.net)

Rua Guilhermina Alves de Lacerda, 148  
Pilotos - Quatis - RJ - CEP: 27420-245





Usifer  
**CA-USI-WI**

Sankyo  
**SUWB**

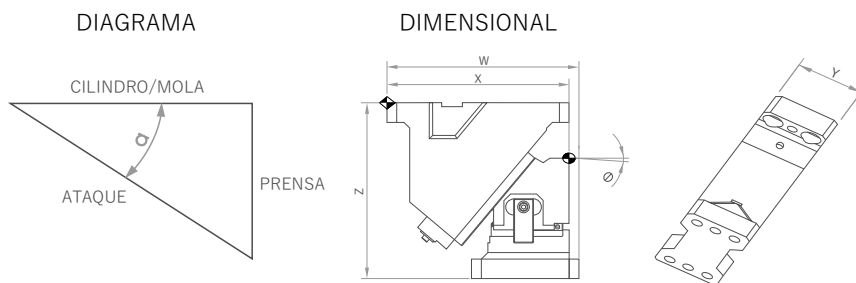
Voestalpine

—

Tribomat  
**CAT-A**

Medidas mm  
200 300 400 500 600

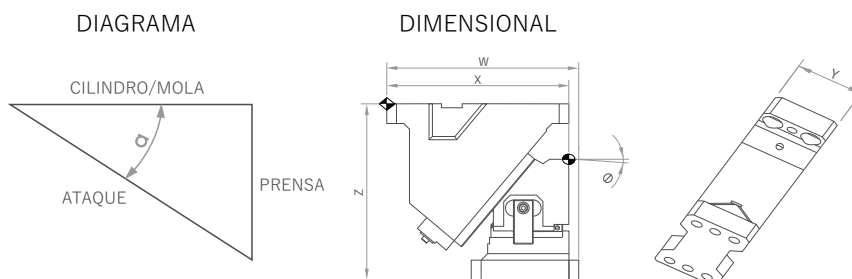
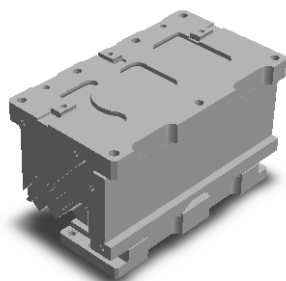
### Cursos e Dimensões



Medidas mm  
200

Cunha Aérea	Cursos (mm)			Ângulo	Dimensional			
	Ataque	Cilindro/Mola	Prensa		Z	Y	W	X
CA-USI-WI-200-00	38,6	60	45,9	0°	350	200	340	313
CA-USI-WI-200-05	42,6	60	46,1	5°	350	200	340	320,64
CA-USI-WI-200-10	46,7	60	46,7	10°	350	200	340	331,08
CA-USI-WI-200-15	50,9	60	46,7	15°	350	200	340	336,17
CA-USI-WI-200-20	55,3	60	48,9	20°	350	200	341	340,76
CA-USI-WI-200-30	65,1	60	53	30°	350	200	348	347,83
CA-USI-WI-200-40	77,1	60	60	40°	350	200	351	351,17
CA-USI-WI-200-50	93,3	60	71,5	50°	350	200	355	348,77
CA-USI-WI-200-60	120	60	103,9	60°	350	200	385	332,75

## Cursos e Dimensões

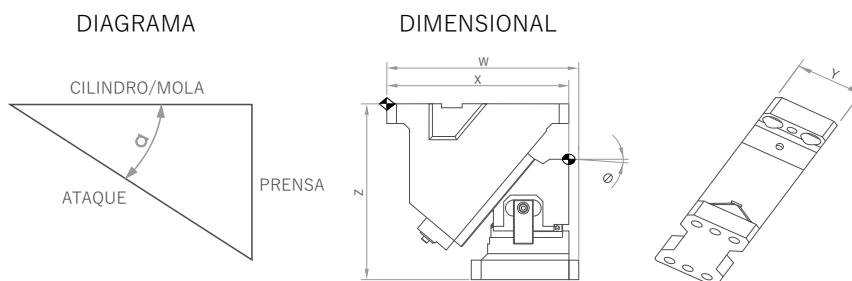
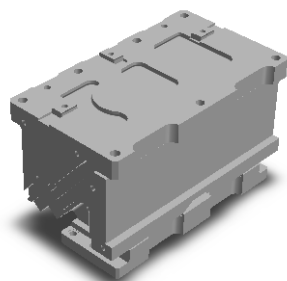


Medidas mm

300

Cunha Aérea	Cursos (mm)			Ângulo	Dimensional			
	Ataque	Cilindro/Mola	Prensa		Z	Y	W	X
CA-USI-WI-300-00	38,6	60	45,9	0°	350	300	340	313
CA-USI-WI-300-05	42,6	60	46,1	5°	350	300	340	320,64
CA-USI-WI-300-10	46,7	60	46,7	10°	350	300	340	331,08
CA-USI-WI-300-15	50,9	60	46,7	15°	350	300	340	336,17
CA-USI-WI-300-20	55,3	60	48,9	20°	350	300	341	340,76
CA-USI-WI-300-30	65,1	60	53	30°	350	300	348	347,83
CA-USI-WI-300-40	77,1	60	60	40°	350	300	351	351,17
CA-USI-WI-300-50	93,3	60	71,5	50°	350	300	355	348,77
CA-USI-WI-300-60	120	60	103,9	60°	350	300	385	332,75

## Cursos e Dimensões

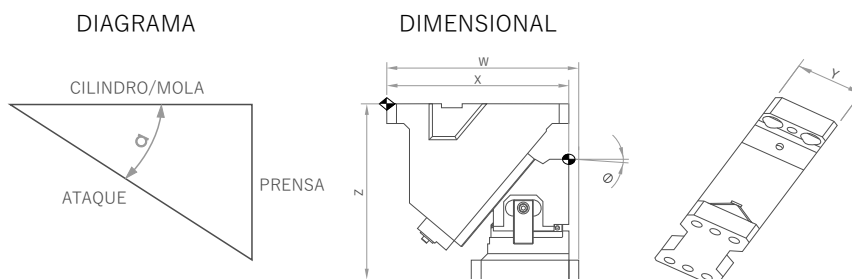
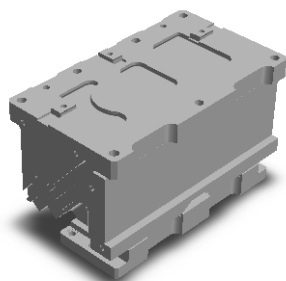


Medidas mm

400

Cunha Aérea	Cursos (mm)			Ângulo	Dimensional			
	Ataque	Cilindro/Mola	Prensa		Z	Y	W	X
CA-USI-WI-400-00	38,6	60	45,9	0°	350	400	340	313
CA-USI-WI-400-05	42,6	60	46,1	5°	350	400	340	320,64
CA-USI-WI-400-10	46,7	60	46,7	10°	350	400	340	331,08
CA-USI-WI-400-15	50,9	60	46,7	15°	350	400	340	336,17
CA-USI-WI-400-20	55,3	60	48,9	20°	350	400	341	340,76
CA-USI-WI-400-30	65,1	60	53	30°	350	400	348	347,83
CA-USI-WI-400-40	77,1	60	60	40°	350	400	351	351,17
CA-USI-WI-400-50	93,3	60	71,5	50°	350	400	355	348,77
CA-USI-WI-400-60	120	60	103,9	60°	350	400	385	332,75

## Cursos e Dimensões

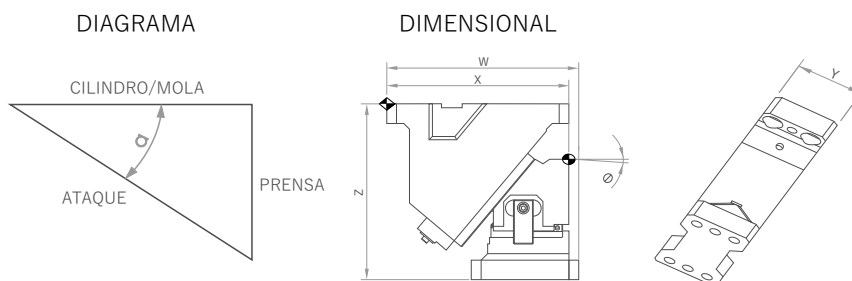
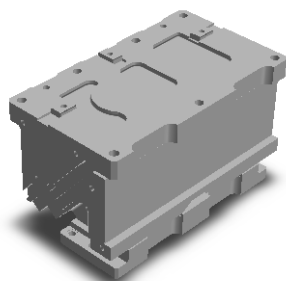


Medidas mm

500

Cunha Aérea	Cursos (mm)			Ângulo	Dimensional			
	Ataque	Cilindro/Mola	Prensa		Z	Y	W	X
Modelo				Grau				
CA-USI-WI-500-00	38,6	60	45,9	0°	350	500	340	313
CA-USI-WI-500-05	42,6	60	46,1	5°	350	500	340	320,64
CA-USI-WI-500-10	46,7	60	46,7	10°	350	500	340	331,08
CA-USI-WI-500-15	50,9	60	46,7	15°	350	500	340	336,17
CA-USI-WI-500-20	55,3	60	48,9	20°	350	500	341	340,76
CA-USI-WI-500-30	65,1	60	53	30°	350	500	348	347,83
CA-USI-WI-500-40	77,1	60	60	40°	350	500	351	351,17
CA-USI-WI-500-50	93,3	60	71,5	50°	350	500	355	348,77
CA-USI-WI-500-60	120	60	103,9	60°	350	500	385	332,75

## Cursos e Dimensões



Medidas mm

600

Cunha Aérea	Cursos (mm)			Ângulo	Dimensional			
	Ataque	Cilindro/Mola	Prensa		Z	Y	W	X
CA-USI-WI-600-00	38,6	60	45,9	0°	350	600	340	313
CA-USI-WI-600-05	42,6	60	46,1	5°	350	600	340	320,64
CA-USI-WI-600-10	46,7	60	46,7	10°	350	600	340	331,08
CA-USI-WI-600-15	50,9	60	46,7	15°	350	600	340	336,17
CA-USI-WI-600-20	55,3	60	48,9	20°	350	600	341	340,76
CA-USI-WI-600-30	65,1	60	53	30°	350	600	348	347,83
CA-USI-WI-600-40	77,1	60	60	40°	350	600	351	351,17
CA-USI-WI-600-50	93,3	60	71,5	50°	350	600	355	348,77
CA-USI-WI-600-60	120	60	103,9	60°	350	600	385	332,75