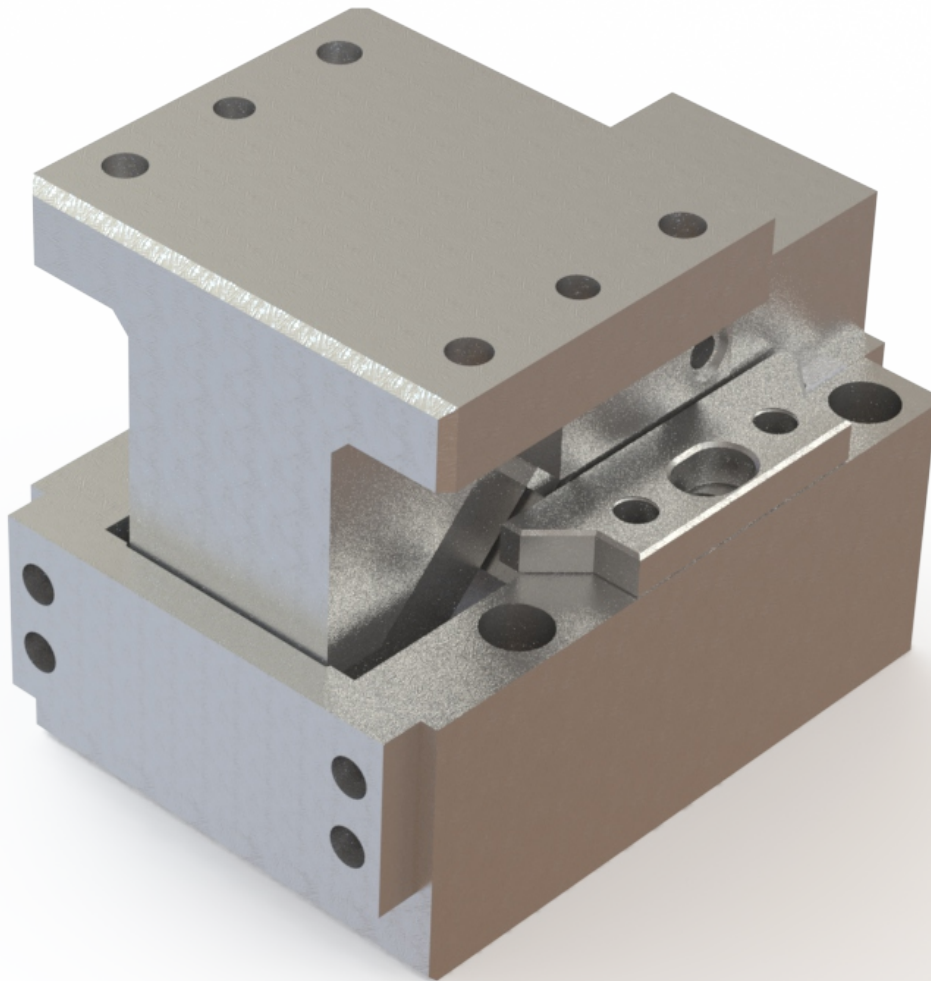


Cunhas Terrestres

CT-USI-KC



Usifer Usinagem e Ferramentaria

+55 24 3353-5366

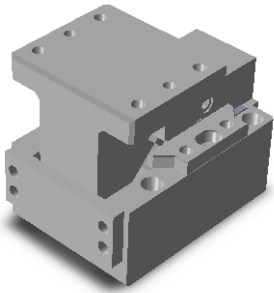
+55 24 7812-4870 - ID 104*213131

comercial@usifer.net

www.usifer.net

Rua Guilhermina Alves de Lacerda, 148
Pilotos - Quatis - RJ - CEP: 27420-245





Usifer
CT-USI-KC

Sankyo
SKC/SKCA

Voestalpine

—

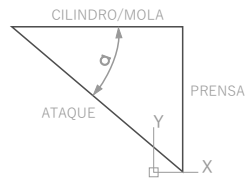
Tribomat
CTT-C

Medidas mm

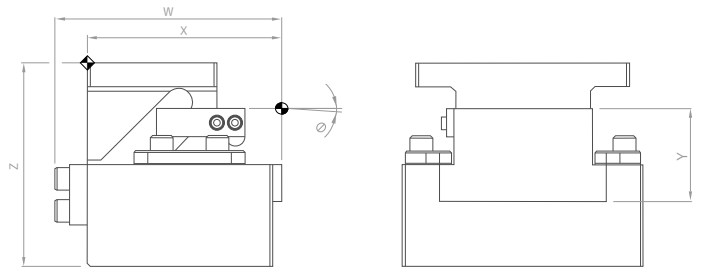
52 65 100 150 200 250 300

Cursos e Dimensões

DIAGRAMA



DIMENSIONAL

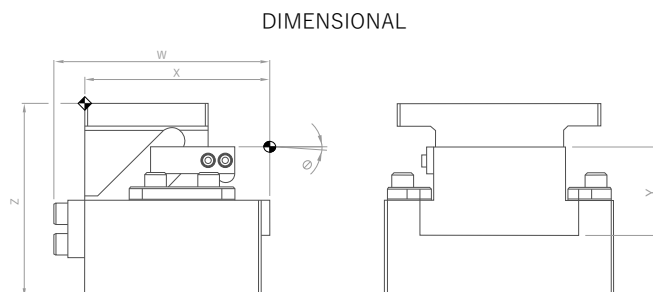
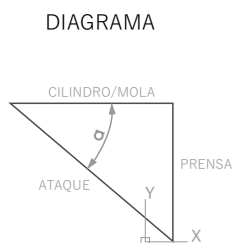
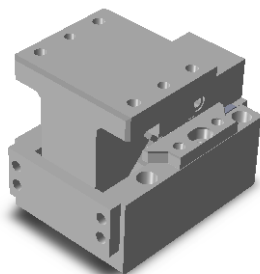


Medidas mm

52

Cunha Terrestre	Cursos (mm)			Ângulo	Dimensional			
Modelo	Ataque	Cilindro/Mola	Prensa	Grau	Z	Y	W	X
CT-USI-KC-52-25	25	25	25	0°	140	65	140	120
CT-USI-KC-52-40	40	40	40	0°	140	65	155	135
CT-USI-KC-52-60	60	60	60	0°	140	65	200	180

Cursos e Dimensões

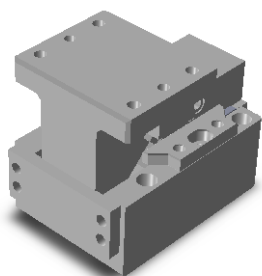


Medidas mm

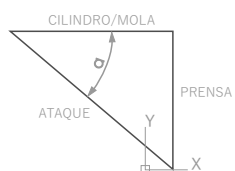
65

Cunha Terrestre	Cursos (mm)			Ângulo	Dimensional			
	Ataque	Cilindro/Mola	Prensa		Grau	Z	Y	W
CT-USI-KC-65-00-40	40	40	40	0°	265	70	167	140
CT-USI-KC-65-00-60	60	60	60	0°	265	70	212	190
CT-USI-KC-65-45-05	45	45	67,9	5°	265	70	175,55	150,55
CT-USI-KC-65-70-05	70	70	105,7	5°	265	70	220,38	195,38
CT-USI-KC-65-45-10	45	45	60,6	10°	265	70	179,95	154,95
CT-USI-KC-65-70-10	70	70	94,3	10°	265	70	224,27	199,27
CT-USI-KC-65-45-15	45	45	55,1	15°	265	70	183,18	158,18
CT-USI-KC-65-70-15	70	70	85,7	15°	265	70	226,64	201,64
CT-USI-KC-65-45-20	45	45	50,8	20°	265	70	185,2	160,2
CT-USI-KC-65-70-20	70	70	79,1	20°	265	70	227,48	202,48

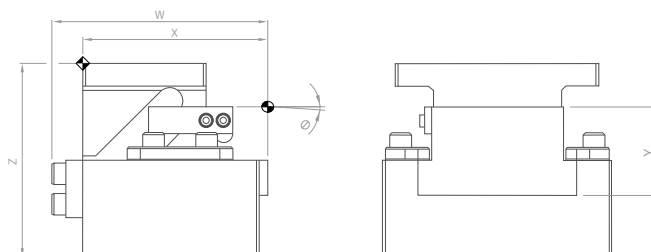
Cursos e Dimensões



DIAGRAMA



DIMENSIONAL

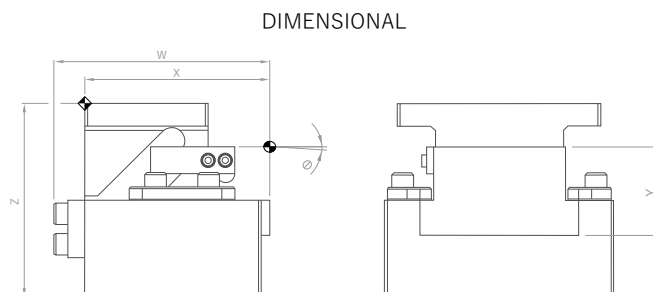
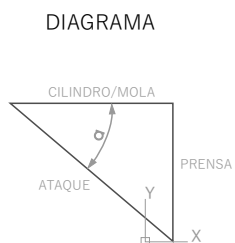
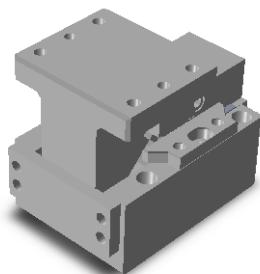


Medidas mm

100

Cunha Terrestre	Cursos (mm)			Ângulo	Dimensional			
	Ataque	Cilindro/Mola	Prensa		Grau	Z	Y	W
CT-USI-KC-100-00-40	40	40	40	0°	200	100	218	190
CT-USI-KC-100-00-60	60	60	60	0°	200	100	238	210
CT-USI-KC-100-00-80	80	80	80	0°	200	100	277	250
CT-USI-KC-100-05-45	45	45	67,9	5°	200	90	199,22	172,22
CT-USI-KC-100-05-70	70	70	105,7	5°	200	90	234,08	207,08
CT-USI-KC-100-10-45	45	45	60,6	10°	200	90	205,12	178,12
CT-USI-KC-100-10-70	70	70	55,1	10°	200	90	239,59	212,59
CT-USI-KC-100-15-45	45	45	94,3	15°	200	90	209,67	182,67
CT-USI-KC-100-15-70	70	70	85,7	15°	200	90	243,48	216,48
CT-USI-KC-100-20-45	45	45	50,8	20°	200	90	212,83	185,83
CT-USI-KC-100-20-70	70	70	79,1	20°	200	90	245,72	218,72

Cursos e Dimensões

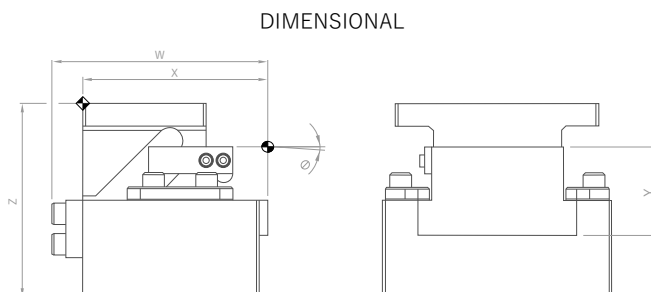
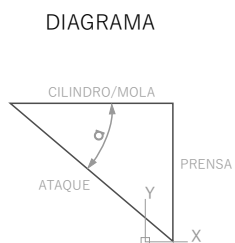
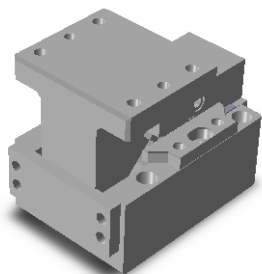


Medidas mm

150

Cunha Terrestre	Cursos (mm)			Ângulo	Dimensional			
	Ataque	Cilindro/Mola	Prensa		Grau	Z	Y	W
CT-USI-KC-150-00-40	40	40	40	0°	220	100	225	190
CT-USI-KC-150-00-60	60	60	60	0°	220	100	245	210
CT-USI-KC-150-05-45	45	45	67,9	5°	220	100	229,01	193,01
CT-USI-KC-150-05-70	70	70	105,7	5°	220	100	253,92	217,92
CT-USI-KC-150-10-45	45	45	60,6	10°	220	100	235,55	199,55
CT-USI-KC-150-10-70	70	70	94,3	10°	220	100	260,174	224,174
CT-USI-KC-150-15-45	45	45	55,1	15°	220	100	240,58	204,58
CT-USI-KC-150-15-70	70	70	85,7	15°	230	100	264,73	228,73
CT-USI-KC-150-20-45	45	45	50,8	20°	220	100	244,04	208,05
CT-USI-KC-150-20-70	70	70	79,1	20°	230	100	267,54	231,54

Cursos e Dimensões



Medidas mm

200

Cunha Terrestre	Cursos (mm)			Ângulo	Dimensional			
Modelo	Ataque	Cilindro/Mola	Prensa	Grau	Z	Y	W	X
CT-USI-KC-200-00-40	40	40	40	0°	240	110	236	200
CT-USI-KC-200-00-60	60	60	60	0°	240	110	256	220

Medidas mm

250

Cunha Terrestre	Cursos (mm)			Ângulo	Dimensional			
Modelo	Ataque	Cilindro/Mola	Prensa	Grau	Z	Y	W	X
CT-USI-KC-250-00-40	40	40	40	0°	270	130	246	210
CT-USI-KC-250-00-60	60	60	60	0°	270	130	266	230

Medidas mm

300

Cunha Terrestre	Cursos (mm)			Ângulo	Dimensional			
Modelo	Ataque	Cilindro/Mola	Prensa	Grau	Z	Y	W	X
CT-USI-KC-300-00-40	40	40	40	0°	270	130	246	210
CT-USI-KC-300-00-60	60	60	60	0°	270	130	266	230