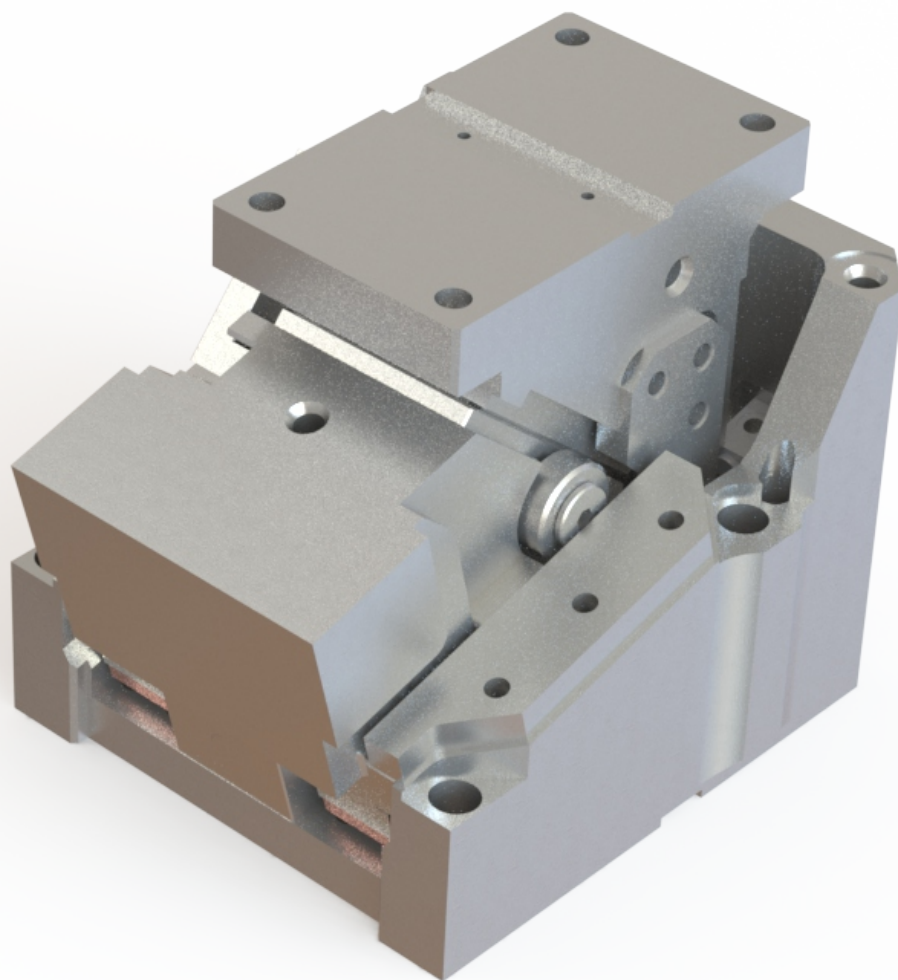




Cunhas Terrestres

CT-Usi-KG



Usifer Usinagem e Ferramentaria

+55 24 3353-5366

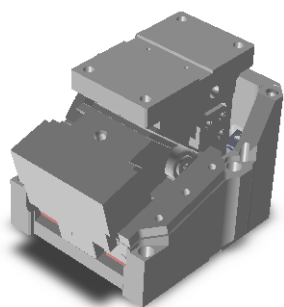
+55 24 7812-4870 - ID 104*213131

comercial@usifer.net

www.usifer.net

Rua Guilhermina Alves de Lacerda, 148
Pilotos - Quatis - RJ - CEP: 27420-245





Usifer
CT-Usi-KG

Sankyo
KGSP

Voestalpine

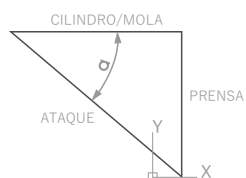
—

Tribomat
CTT-A

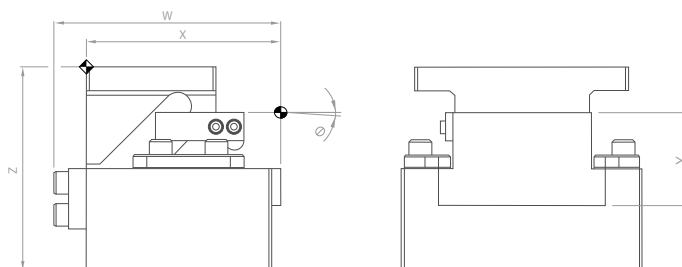
Medidas mm
50 80 150 200 300

Cursos e Dimensões

DIAGRAMA



DIMENSIONAL

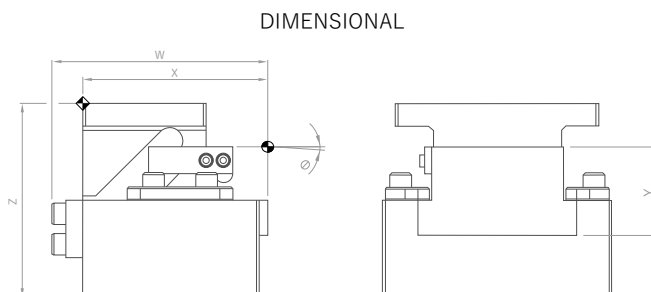
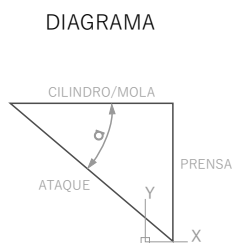
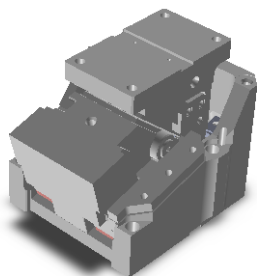


Medidas mm

50

Cunha Terrestre	Cursos (mm)			Ângulo	Dimensional			
Modelo	Ataque	Cilindro/Mola	Prensa	Grau	Z	Y	W	X
CT-Usi-KG-50-00	60	60	85,6	0°	240	68	255	230
CT-Usi-KG-50-05	60	60	76,5	5°	240	68	290	236,25
CT-Usi-KG-50-10	60	60	69,5	10°	240	68	290	237,27
CT-Usi-KG-50-15	60	60	64,2	15°	240	68	297,97	242,97
CT-Usi-KG-50-20	60	60	60	20°	240	68	308,26	238,26
CT-Usi-KG-50-25	60	60	56,8	25°	240	68	308,07	238,07
CT-Usi-KG-50-30	60	60	54,2	30°	240	68	312,32	232,32

Cursos e Dimensões



Medidas mm

80

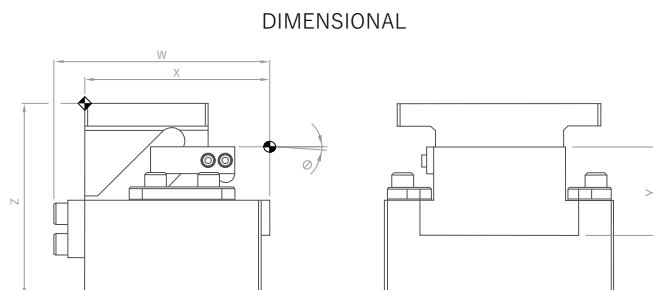
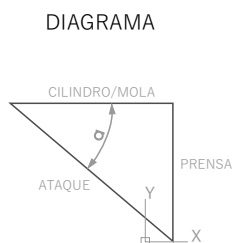
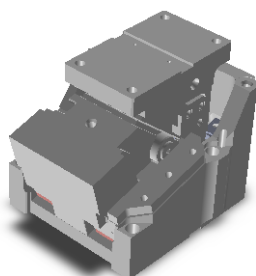
Cunha Terrestre	Cursos (mm)			Ângulo	Dimensional			
	Ataque	Cilindro/Mola	Prensa		Grau	Z	Y	W
CT-USI-KG-80-00	60	60	85,7	0°	265	88	310	235
CT-USI-KG-80-05	60	60	76,5	5°	265	88	310	238,32
CT-USI-KG-80-10	60	60	69,5	10°	265	88	310	248,17
CT-USI-KG-80-15	60	60	64,2	15°	265	88	312,6	252,6
CT-USI-KG-80-20	60	60	60	20°	265	88	321,51	251,51
CT-USI-KG-80-25	60	60	56,8	25°	265	88	329,77	249,78
CT-USI-KG-80-30	60	60	54,2	30°	265	88	332,31	247,31

Medidas mm

150

Cunha Terrestre	Cursos (mm)			Ângulo	Dimensional			
	Ataque	Cilindro/Mola	Prensa		Grau	Z	Y	W
CT-USI-KG-150-00	60	60	85,6	0°	300	120	365	350
CT-USI-KG-150-05	60	60	76,5	5°	300	120	378,47	363,47
CT-USI-KG-150-10	60	60	69,5	10°	310	120	385,01	370,01
CT-USI-KG-150-15	60	60	64,2	15°	310	120	394,53	379,53
CT-USI-KG-150-20	60	60	60	20°	335	120	396,96	381,96
CT-USI-KG-150-25	60	60	56,8	25°	345	120	397,25	382,25
CT-USI-KG-150-30	60	60	54,2	30°	360	120	400,35	385,25

Cursos e Dimensões



Medidas mm

200

Cunha Terrestre	Cursos (mm)			Ângulo	Dimensional			
	Ataque	Cilindro/Mola	Prensa		Grau	Z	Y	W
CT-USI-KG-200-00	60	60	85,6	0°	300	120	365	350
CT-USI-KG-200-05	60	60	76,5	5°	300	120	378,47	363,47
CT-USI-KG-200-10	60	60	69,5	10°	310	120	385,01	370,01
CT-USI-KG-200-15	60	60	64,2	15°	310	120	394,53	379,53
CT-USI-KG-200-20	60	60	60	20°	335	120	396,96	381,96
CT-USI-KG-200-25	60	60	56,8	25°	345	120	397,25	382,25
CT-USI-KG-200-30	60	60	54,2	30°	360	120	400,35	385,25

Medidas mm

300

Cunha Terrestre	Cursos (mm)			Ângulo	Dimensional			
	Ataque	Cilindro/Mola	Prensa		Grau	Z	Y	W
CT-USI-KG-300-00	60	60	85,6	0°	335	120	420	390
CT-USI-KG-300-05	60	60	76,5	5°	335	120	431,84	401,84
CT-USI-KG-300-10	60	60	69,5	10°	355	120	442,57	412,57
CT-USI-KG-300-15	60	60	64,2	15°	355	120	449,63	419,63
CT-USI-KG-300-20	60	60	60	20°	375	120	454,17	424,17
CT-USI-KG-300-25	60	60	56,8	25°	385	120	461,14	431,14
CT-USI-KG-300-30	60	60	54,2	30°	405	120	465,47	435,47