

Usifer Usinagem e Ferramentaria

+55 24 3353-5366

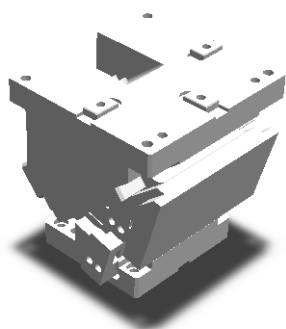
+55 24 7812-4870 - ID 104*213131

comercial@usifer.net

www.usifer.net

Rua Guilhermina Alves de Lacerda, 148
Pilotos - Quatis - RJ - CEP: 27420-245





Usifer
CA-USI-BR

Sankyo
UCMS-G

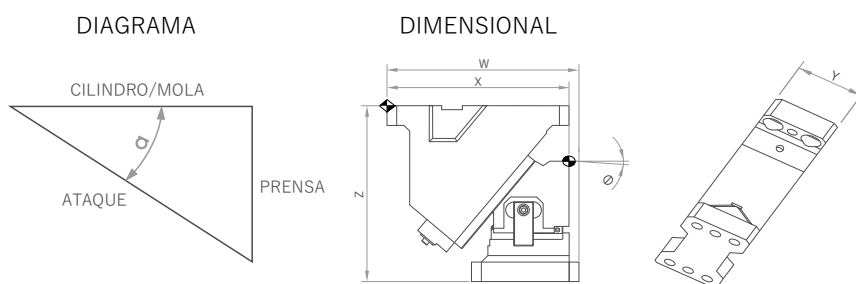
Voestalpine
—

Tribomat
CAT-F

Medidas mm

50 65 80 150 200 300

Cursos e Dimensões

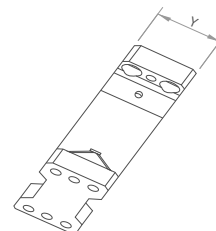
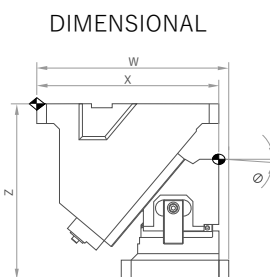
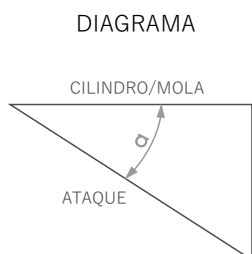
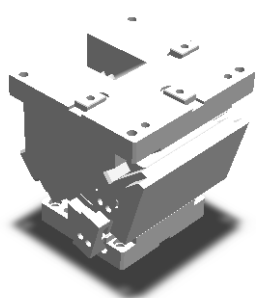


Medidas mm

50

Cunha Aérea	Cursos (mm)			Ângulo	Dimensional			
	Ataque	Cilindro/Mola	Prensa		Z	Y	W	X
CA-USI-BR-50-00	15	23,3	17,8	0°	180	50	225	195
CA-USI-BR-50-05	15,6	22	16,9	5°	180	50	220	198,04
CA-USI-BR-50-10	15,6	20	15,6	10°	180	50	210	195,99
CA-USI-BR-50-15	17	20	15,9	15°	180	50	210	198,77
CA-USI-BR-50-20	18,4	20	16,3	20°	180	50	210	196,34
CA-USI-BR-50-25	18	18	15,2	25°	180	50	210	191,62
CA-USI-BR-50-30	17,4	16	14,2	30°	180	50	210	190,58
CA-USI-BR-50-35	18,9	16	15	35°	180	50	210	187,15
CA-USI-BR-50-40	20,6	16	16	40°	180	50	210	183,29
CA-USI-BR-50-45	22,5	16	17,3	45°	180	50	210	179,94
CA-USI-BR-50-50	23,3	15	17,9	50°	180	50	210	174,07
CA-USI-BR-50-55	26,1	15	20	55°	180	50	225	168,64
CA-USI-BR-50-60	31,5	16	24,5	60°	180	50	235	162,61
CA-USI-BR-50-65	36,6	16	29	65°	180	50	245	155,95

Cursos e Dimensões

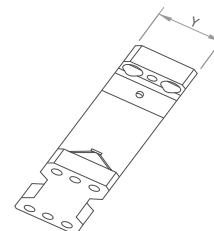
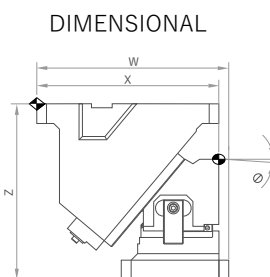
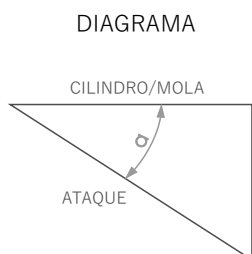
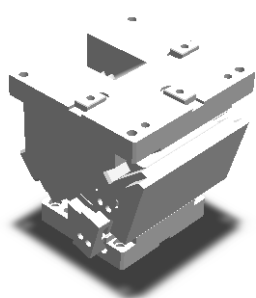


Medidas mm

65

Cunha Aérea	Cursos (mm)			Ângulo	Dimensional			
	Ataque	Cilindro/Mola	Prensa		Z	Y	W	X
CA-USI-BR-65-00	15	23,3	17,8	0°	175	65	190	170
CA-USI-BR-65-05	15,6	22	16,9	5°	175	65	185	170,36
CA-USI-BR-65-10	15,6	20	15,6	10°	175	65	182	175,07
CA-USI-BR-65-15	17	20	15,9	15°	175	65	175	174,09
CA-USI-BR-65-20	18,4	20	16,3	20°	175	65	172	172,4
CA-USI-BR-65-30	19,5	18	15,9	30°	175	65	172	171,78
CA-USI-BR-65-40	23,1	18	18	40°	175	65	170	163,07
CA-USI-BR-65-50	24,9	16	19,1	50°	175	65	170	155,22
CA-USI-BR-65-60	32	16	27,7	60°	175	65	185	146,29

Cursos e Dimensões

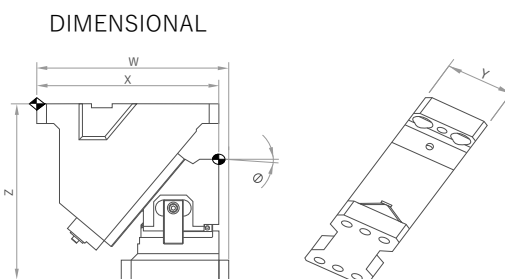
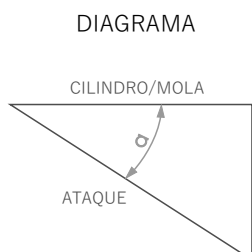
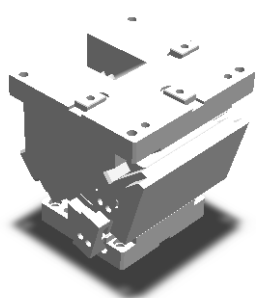


Medidas mm

80

Cunha Aérea	Cursos (mm)			Ângulo	Dimensional			
	Ataque	Cilindro/Mola	Prensa		Z	Y	W	X
CA-USI-BR-80-00	30,2	47,7	36	0°	270	80	305	277
CA-USI-BR-80-05	30,5	43	33,1	5°	270	80	295	278,32
CA-USI-BR-80-10	31,1	40	31,1	10°	270	80	280	274,54
CA-USI-BR-80-15	33,9	40	31,7	15°	270	80	278	277,58
CA-USI-BR-80-20	32,3	35	28,5	20°	270	80	273	273,34
CA-USI-BR-80-25	35	35	29,6	25°	270	80	270	268,75
CA-USI-BR-80-30	34,7	32	28,3	30°	270	80	270	261,73
CA-USI-BR-80-35	37,7	32	29,9	35°	270	80	270	258,2
CA-USI-BR-80-40	39,9	31	31	40°	270	80	270	245,09
CA-USI-BR-80-45	43,7	31	33,6	45°	270	80	270	245,34
CA-USI-BR-80-50	46,7	30	35,8	50°	270	80	270	225,87
CA-USI-BR-80-55	53,8	31	41,4	55°	270	80	270	229,64
CA-USI-BR-80-60	61,1	31	47,5	60°	270	80	290	208,58
CA-USI-BR-80-65	70,9	31	56,2	65°	270	80	300	203,67

Cursos e Dimensões

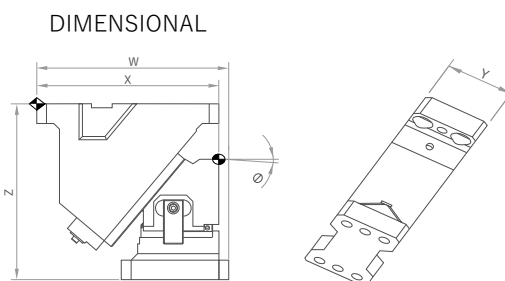
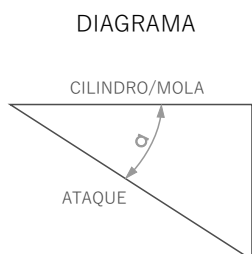
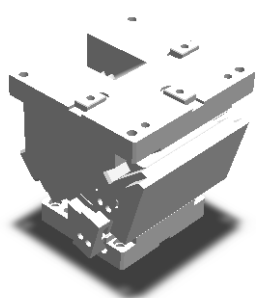


Medidas mm

150

Cunha Aérea	Cursos (mm)			Ângulo	Dimensional			
	Ataque	Cilindro/Mola	Prensa		Z	Y	W	X
CA-USI-BR-150-00	28,7	50	40,9	0°	355	240	325	325
CA-USI-BR-150-05	32,2	50	41,1	5°	355	240	325	319,7
CA-USI-BR-150-10	35,9	50	41,5	10°	355	240	325	319,06
CA-USI-BR-150-15	39,6	50	42,4	15°	355	240	325	322,98
CA-USI-BR-150-20	43,5	50	43,5	20°	355	240	326	326,33
CA-USI-BR-150-25	47,7	50	45,1	25°	355	240	329	329,03
CA-USI-BR-150-30	52,3	50	47,2	30°	355	240	326	325,98
CA-USI-BR-150-35	57,3	50	50	35°	355	240	340	322,08
CA-USI-BR-150-40	63	50	53,4	40°	355	240	360	312,26
CA-USI-BR-150-45	69,6	50	57,9	45°	355	240	375	306,42
CA-USI-BR-150-50	77,4	50	63,7	50°	355	240	395	294,51
CA-USI-BR-150-55	87,1	50	71,4	55°	355	240	415	281,46
CA-USI-BR-150-60	99,6	50	81,9	60°	355	240	430	272,22
CA-USI-BR-150-65	116,5	50	96,9	65°	355	240	280	261,75

Cursos e Dimensões

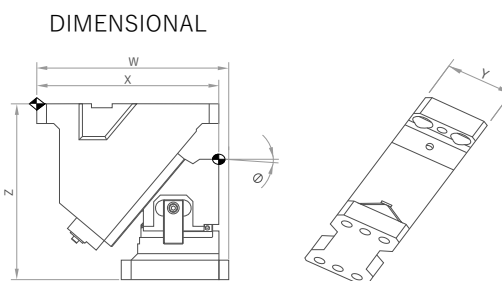
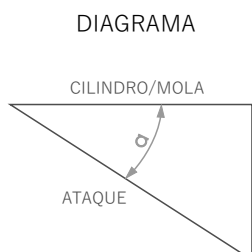
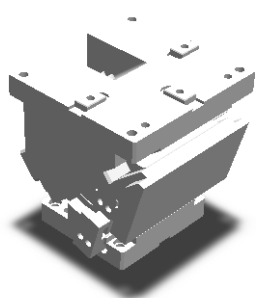


Medidas mm

200

Cunha Aérea	Cursos (mm)			Ângulo	Dimensional			
	Ataque	Cilindro/Mola	Prensa		Z	Y	W	X
CA-USI-BR-200-00	28,7	50	40,9	0°	355	270	325	325
CA-USI-BR-200-05	32,2	50	41,1	5°	355	270	325	319,7
CA-USI-BR-200-10	35,9	50	41,5	10°	355	270	325	319,06
CA-USI-BR-200-15	39,6	50	42,4	15°	355	270	325	322,98
CA-USI-BR-200-20	43,5	50	43,5	20°	355	270	326	326,33
CA-USI-BR-200-25	47,7	50	45,1	25°	355	270	329	329,03
CA-USI-BR-200-30	52,3	50	47,2	30°	355	270	326	325,98
CA-USI-BR-200-35	57,3	50	50	35°	355	270	340	322,08
CA-USI-BR-200-40	63	50	53,4	40°	355	270	360	312,26
CA-USI-BR-200-45	69,6	50	57,9	45°	355	270	375	306,42
CA-USI-BR-200-50	77,4	50	63,7	50°	355	270	395	294,51
CA-USI-BR-200-55	87,1	50	71,4	55°	355	270	415	281,46
CA-USI-BR-200-60	99,6	50	81,9	60°	355	270	430	272,22
CA-USI-BR-200-65	116,5	50	96,9	65°	355	270	445	261,75

Cursos e Dimensões



Medidas mm

300

Cunha Aérea	Cursos (mm)			Ângulo	Dimensional			
	Ataque	Cilindro/Mola	Prensa		Z	Y	W	X
CA-USI-BR-300-00	28,7	50	40,9	0°	355	340	325	325
CA-USI-BR-300-05	32,2	50	41,1	5°	355	340	325	323,19
CA-USI-BR-300-10	35,9	50	41,5	10°	355	340	326	326,01
CA-USI-BR-300-15	39,6	50	42,4	15°	355	340	333	333,33
CA-USI-BR-300-20	43,5	50	43,5	20°	355	340	340	340,02
CA-USI-BR-300-25	47,7	50	45,1	25°	355	340	346	345,95
CA-USI-BR-300-30	52,3	50	47,2	30°	355	340	346	345,98
CA-USI-BR-300-35	57,3	50	50	35°	355	340	360	345,03
CA-USI-BR-300-40	63	50	53,4	40°	355	340	373	337,97
CA-USI-BR-300-45	69,6	50	57,9	45°	355	340	385	334,71
CA-USI-BR-300-50	77,4	50	63,7	50°	355	340	395	325,15
CA-USI-BR-300-55	87,1	50	71,4	55°	355	340	415	314,23
CA-USI-BR-300-60	99,6	50	81,9	60°	355	340	430	306,87
CA-USI-BR-300-65	116,5	50	96,9	65°	355	340	445	298